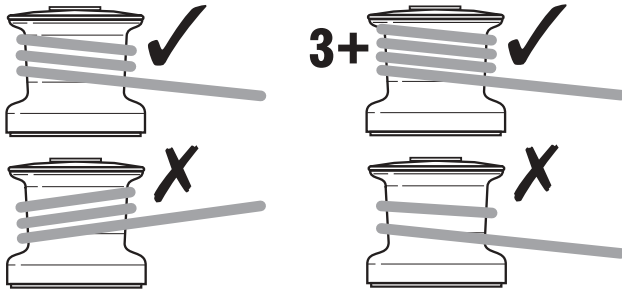


5CT & 7CT WINCHES

⚠ WARNING

Read this before installing or using your winch.

- Please ensure that you thoroughly understand the operation and safety requirements of the winch before commencing installation or operation. Only persons who are completely familiar with the proper use of the unit should be allowed to use the winch.
- These winches have been designed only for use on small sailing vessels.
- Do not use this winch for the transportation or movement of people.
- Do not attempt to pull a load greater than the Safe Working Load (SWL) of the winch. 5CT has a SWL of 200kg and 7CT has a SWL of 275kg.
- To avoid personal injury, keep well clear of the rope entering the winch.
- Do not exceed the SWL of the rope. i.e. small diameter lines are used.
- Do not apply a load greater than the SWL to the winch.
- Do not use the winch as a mooring point.
- Never operate the winch if it is partially dismantled or incomplete as an assembly.
- When not in use, do not tie off loads to the winch.
- Always remove the handle after operating the winch.
- Ensure the winch is adequately secured to the deck and that the deck has sufficient strength to withstand all the winching loads. Ensure deck mounting is flat.



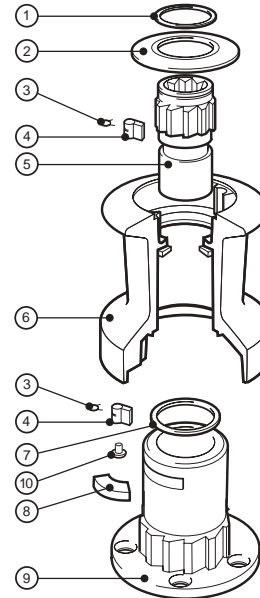
Composite Technology (CT) Winches from Lewmar are the culmination of new materials technology coupled with Lewmar's innovative research and development programme. Special plastics that are fibre re-reinforced are used to ensure a strong lightweight structure with a high power to weight ratio. Lightweight yet immensely tough for their size, these winches have been designed to exacting quality standards, well maintained and properly used these winches will provide a long service life.

Installation.

Dismantle the winch as per the instructions below. Ensure the deck is flat and suitably strong enough to withstand the winch loads. Drill the holes through the deck. Mount the winch base to the deck and fit the mounting screws. Use a metal or Plywood lower deck plate to re-enforce the deck where required. Tighten the mounting screws and use lock nuts or suitable thread locking adhesive.

Dismantling and Assembly.

1. Remove the spiral locking Circlip (1).
2. Remove Top Plate (2) and lift off Drum (6).
3. Remove the Spindle (5) by easing out the Retaining Key (8).
4. Remove, clean and inspect the four Pawls (4) and Pawl Springs (3) located in the Drum. To remove the lower pawls, pull out the snap rivet (10).
5. Lift off drum thrust washer from top of centre stem.
6. Reassemble the winch in the reverse sequence.



Service.

Lewmar winches like any other precision engineered product, must be serviced regularly. As winches carry deceptively high loads, regular servicing with attention to correct assembly and condition of parts is vital to the safety and performance of the winch. Never use a damaged or worn part, always fit new. Always clean the winches off after use. At least 2 or 3 times during an active sailing season, winches should be stripped cleaned and lubricated. At the end of each season the winches should be stripped cleaned thoroughly inspected, parts renewed where required, lubricated and assembled.

Maintenance.

Clean the drum using fresh water. Lubricate the winch drum bore, Centre Stem, Spindle and Drum Thrust washer with winch grease. Clean and lightly grease the ratchet tracks. Pawls should be clean and lightly oiled with winch oil. NEVER grease a pawl.

Item	Description	5CT Part No.	7CT Part No.	Qty.
-	Complete Winch	49005015	49007015	-
1	*Circlip	B2075	B2075	1
2	Top Cap	45001020	45001120	1
3	*Pawl Spring	1260-7	1260-7	5
4	*Pawl	1260-8	1260-8	5
5	Spindle	45001018	45001018	1
6	Drum	45004447	45004480	1
7	*Drum Thrust Washer	45004435	45004435	1
8	Retaining Key	15006005	15010005	1
9	Centre Stem	15000144	15000143	1
10	*Snap Rivet	B2246	B2246	3

*Recommended spares

Upgrade Kits and replacement CT Drums.

The CT winches can be upgraded to metal drum versions, see the upgrade kit list below:

- 5CT Winch replacement Drum No 45004447
- 5CT Winch can be upgraded to Aluminium Alloy Drum with kit No 48006020
- 5CT Winch can be upgraded to Chrome Drum with kit No 48006021
- 7CT Winch replacement Drum No 45004480
- 7CT Winch can be upgraded to Aluminium Alloy Drum with kit No 48007020
- 7CT Winch can be upgraded to Chrome Drum with kit No 48007021

5CT



7CT



5CT & 7CT

LEWMAR®

www.lewmar.com

© Copyright 2002 Lewmar Ltd. All rights reserved.

B2321

COMPOSITE TECHNOLOGY WINCHES

Issue 1

LEWMAR®