



1. Ankerwinden

Pro-Serie + Pro-Fish Horizontale Ankerwinden

Spezifikationen

MODEL	MAX.CHAIN		MOTOR SUPPLY	MOTOR POWER	MAXIMUM PULL		WORKING LOAD LIMIT		MAXIMUM LINE SPEED		NORMAL CURRENT DRAW	CIRCUIT BREAKER	WEIGHT	
	mm	in	Voltage	Watt	kg	lb	kg	lb	m/min	ft/min	Amp	Amp	kg	lb
Pro-Series 700	7	1/4	12	500	320	700	79	175	32	105	35	50	8.5	19
Pro-Series 1000	8	5/16	12	700	454	1000	114	250	32	105	50	70	9.5	21
Pro-Fish 700	7	1/4	12	500	320	700	79	175	32	105	35	50	8.5	19
Pro-Fish 1000	8	5/16	12	700	454	1000	114	250	32	105	50	70	9.5	21

Pro-Series Kit

PART NO.	DESCRIPTION	GYPSY SPECIFICATIONS	
		Chain	Rope
6656011967-310	Pro-Series 700 Kit	6mm DIN 766, 7mm DIN 766, 1/4" ISO G4, 1/4" BBB	12mm (1/2") 3-strand and 8-plait
6657011967-311	Pro-Series 1000, 6-7mm (1/4") Kit	6mm DIN 766, 7mm DIN 766, 1/4" ISO G4, 1/4" BBB	12mm (1/2") 3-strand and 8-plait
6657011198-311	Pro-Series 1000, 8mm (5/16") Kit	8mm DIN 766, 5/16" BBB, 8mm ISO 4565	14-16mm (9/16-5/8") 3-strand and 8-plait (5/8 only)

Im Kit enthalten: Ankerwinde, Decksdichtung, Montagebolzen, Montageschlüssel, Stromkreisunterbrecher, 2-Wege-Relais und Kippschalter

Pro-Fish Kit

PART NO.	DESCRIPTION	GYPSY SPECIFICATIONS	
		Chain	Rope
6656211967-310	Pro-Fish 700 Kit	6mm DIN 766, 7mm DIN 766, 1/4" ISO G4, 1/4" BBB	12mm (1/2") 3-strand and 8-plait
6656411198-311	Pro-Fish 1000 Kit	8mm DIN 766, 5/16" BBB, 8mm ISO 4565	14-16mm (9/16-5/8") 3-strand and 8-plait (5/8 only)
6656411199-311	Pro-Fish PB	14-16 mm (9/16-5/8") Lead-core line	

Im Kit enthalten: Ankerwinde, Decksdichtung, Montagebolzen, Montageschlüssel, Stromkreisunterbrecher, 2-Wege-Relais und Kippschalter

Pro-Fish Kettennuss Spezifikationen

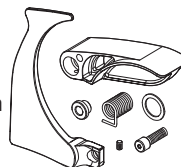
Zur Umrüstung der Pro-Serie in eine Pro-Fish



PART NO.	DESCRIPTION
66000616	Conversion Kit

Pro-Series/Fish Rope Guard und Führungs Arm Upgrade Kit

Einsetzbar für alle Versionen von Pro-Series und Pro-Fish Einheiten. Sind diese mit Kettennuss O118mm RC860 ausgestattet muss diese Ersatz werden.



PART NO.	DESCRIPTION
66000766	Pro-Series/Fish Rope Guard and Control Arm Upgrade Kit

Pro-Fish PB Leaded Rope Kettennuss Kit

passend für 14-16mm Ankertau

PART NO.	DESCRIPTION
66000768	Pro-Fish PB Gypsy Kit

Abmessungs Diagramm

