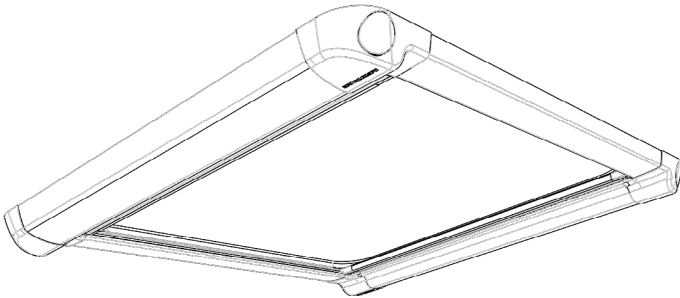


Surface Roller Shade Spare Part

Installation and Owner's Manual

(For Aftermarket Applications)



Surface Roller Spare Parts

| Part # | Description |
|-----------|--------------------------------|
| 367799999 | Surface Roller Spare Parts Kit |
| | |

Table of Contents

| | |
|--|---|
| Introduction | 2 |
| Safety | 2 |
| Parts List | 3 |
| Resources Required | 3 |
| Installation | 3 |
| Easily Replaceable Components | 3 |
| Roller Shade Disassembly | 4 |
| Roller Shade Reassembly | 5 |
| Adjusting Material/Spring Tension | 6 |
| Limited Warranty and Key Terms of Supply by Lewmar | 7 |

Surface Roller Shade Spare Part

Installation and Owner's Manual
(For Aftermarket Applications)

Introduction

Thank you for choosing Lewmar. Lewmar products are world renowned for their quality, technical innovation and proven performance. With a Lewmar product you can expect many years of outstanding service.

Lewmar products are supported by a worldwide network of distributors and Authorised Service Representatives. If you encounter any difficulties with this product, please contact your national distributor, or your local Lewmar dealer. Details are available at: www.lewmar.com

For CE approval certificates contact Lewmar.

Additional information about this product can be obtained from lci1.com/support or by using the LippertNOW app. Replacement kits can be ordered from <https://store.lci1.com/> or by using the LippertNOW app.

The LippertNOW app is available for free on Apple App Store® for iPhone® and iPad® and also on Google Play™ for Android™ users.

App Store® and iPad® are registered trademarks of Apple Inc. Google Play™ and Android™ are trademarks of Google Inc.

Safety

Read and fully understand all instructions before installing or operating this product. Adhere to all safety labels.

This manual provides general instructions. Many variables can change the circumstances of the instructions, i.e., the degree of difficulty, operation and ability of the individual performing the instructions. This manual cannot begin to plot out instructions for every possibility, but provides the general instructions, as necessary, for effectively interfacing with the device, product or system. Failure to correctly follow the provided instructions may result in death, serious personal injury, severe product and/or property damage, including voiding of the Lippert limited warranty.

WARNING

THE "WARNING" SYMBOL ABOVE IS A SIGN THAT AN INSTALLATION PROCEDURE HAS A SAFETY RISK INVOLVED AND MAY CAUSE DEATH, SERIOUS PERSONAL INJURY, SEVERE PRODUCT AND/OR PROPERTY DAMAGE, INCLUDING VOIDING OF THE COMPONENT WARRANTY, IF NOT PERFORMED SAFELY AND WITHIN THE PARAMETERS SET FORTH IN THIS MANUAL.

CAUTION

THE "CAUTION" SYMBOL ABOVE IS A SIGN THAT A PROCEDURE HAS A SAFETY RISK INVOLVED AND MAY CAUSE PERSONAL INJURY, PRODUCT AND/OR PROPERTY DAMAGE IF NOT PERFORMED SAFELY AND WITHIN THE PARAMETERS SET FORTH IN THIS MANUAL.

CAUTION

ALWAYS WEAR APPROPRIATE PERSONAL PROTECTION EQUIPMENT (PPE) WHEN PERFORMING SERVICE, MAINTENANCE OR INSTALLATION PROCEDURES.

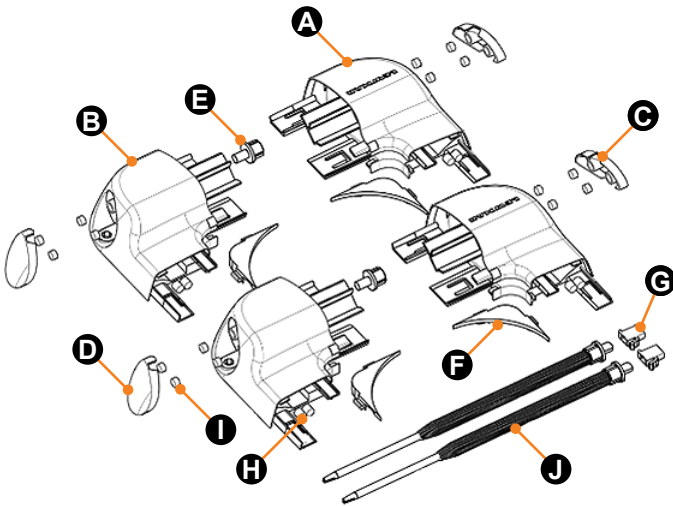
CAUTION

MOVING PARTS CAN PINCH, CUT OR CRUSH. KEEP CLEAR AND USE CAUTION.

Surface Roller Shade Spare Part

Installation and Owner's Manual
(For Aftermarket Applications)

Parts List



Resources Required

- Screwdriver
- Pliers

Installation

Easily Replaceable Components

1. Screw covers (Items C and D) are held into place magnetically, making them easy to replace. These screw covers can be replaced without removal or disassembly of the roller shade.

2. Corner adapter moldings (Item F) (Fig.1A) can be push-fit into the seal grooves on the side rail and cassette without further disassembly.

A. With the roller shade placed upside down on a flat surface, pull back the corner of the seal (Fig.1B) and push the adapter into the rail channels.

B. Push the seal back into place over the adapter.

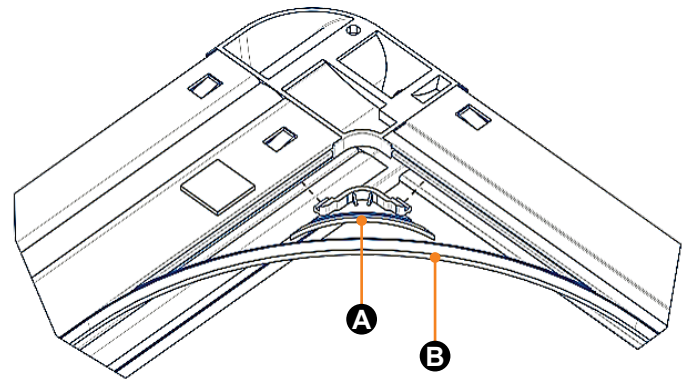


Fig.1

Surface Roller Shade Spare Parts Kit PN 36779999

| Letter | PN | Description | Qty |
|--------|----------|--|-----|
| A | 35003235 | Spring Clip Corner Molding | 2 |
| B | 35003236 | Fixed-pivot Corner Molding | 2 |
| C | 35003241 | Spring Clip Magnetic Screw Cover | 2 |
| D | 35003321 | Fixed-pivot Magnetic Screw Cover | 2 |
| E | 35003249 | Roller Shaft End Molding | 2 |
| F | 35003258 | Corner Adapter Molding | 4 |
| G | 35003261 | Shaft Tensioner Quick Release Clip | 2 |
| H | 35003262 | Neodymium Magnet 5 mm X 5 mm (3/16" X 3/16") | 16 |
| I | 35003267 | Ferrite Magnet 5 mm X 3 mm (3/16" X 1/8") | 16 |
| J | 38003263 | Spring Tensioner | 2 |

NOTE: Part numbers are shown for identification purposes only. Not all parts are available for individual sale. All parts with a link to the Lippert Store can be purchased.

Surface Roller Shade Spare Part

Installation and Owner's Manual
(For Aftermarket Applications)

Roller Shade Disassembly

1. Place the roller shade upside down on a flat surface.
 - A. Remove the silicon seal.
 - B. Carefully slide each side rail (Fig.2A) off the cassettes by pressing in the tabs by the corner (Fig.2B) and remove the corner adapters (Fig.2C).

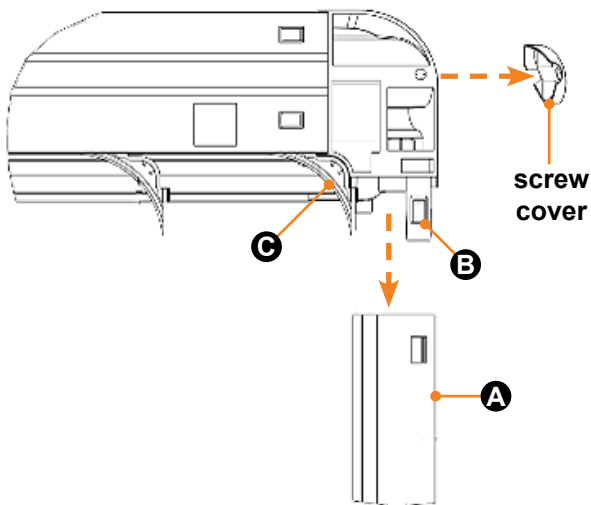


Fig.2

2. To remove the corner moldings (Fig.3A and B);
 - A. Pull out enough of the screen (Fig. 3C) to clear the moldings.
 - B. Press in both tabs (Fig.3D) then slide the moldings out.

NOTE: The inner roller is spring-loaded so corner moldings will release when the cassette is opened. Do **NOT** lose any of the loose parts within the cassette (e.g., the roller shaft end molding (Item E)).

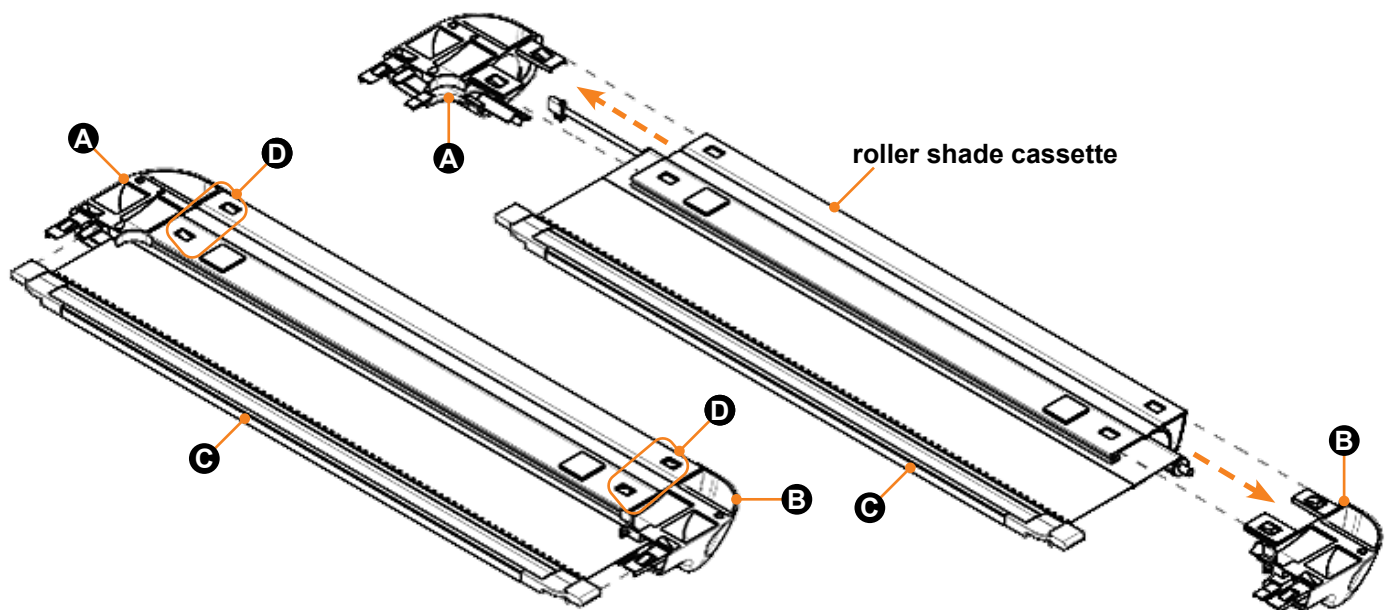


Fig.3

Surface Roller Shade Spare Part

Installation and Owner's Manual
(For Aftermarket Applications)

3. The spring tensioner (Item J) (Fig.4A) and roller shaft end molding (Item E) (Fig.4B) can be pried out by hand or by using a flat head screwdriver. The shaft tensioner quick release clip (Item G) (Fig.4C) is a push-fit and can be detached by hand.

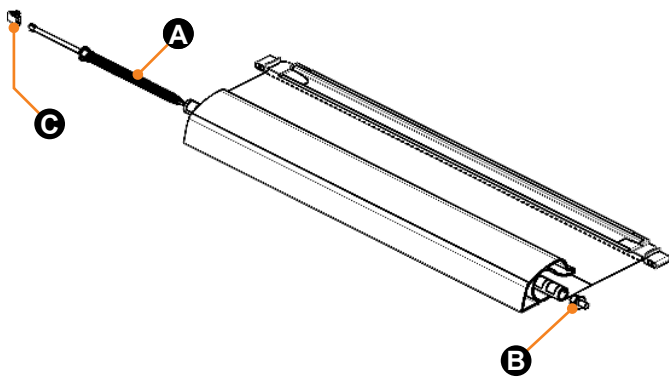


Fig.4

Roller Shade Reassembly

1. The shaft tensioner quick release clip (Item G) can be pushed onto the end of the spring tensioner (Item J).

A. The spring tensioner and roller shaft end molding (Item E) can be pushed into the flyscreen/blind roller (Fig.5).

B. Make sure the end moldings are placed into the correct sides as shown in figure 5.

2. To reconnect the corner moldings (Fig.5A and B):

A. Align the spring tensioner and roller shaft end moldings with the holes in the corner moldings (Fig.5).

B. Release enough of the screen (Fig.5C) as to clear the corner moldings then line up the moldings with the cassette rail.

C. After all parts have been aligned, press the corner moldings into the rail. A click will be heard when the two tabs (Fig.5) have engaged.

3. After the cassette has been reassembled, slide each side rail into the cassette (Fig.2), keeping a close watch that the two tabs and corner radius slide smoothly into the side rail. A click will be heard when the tabs have engaged.

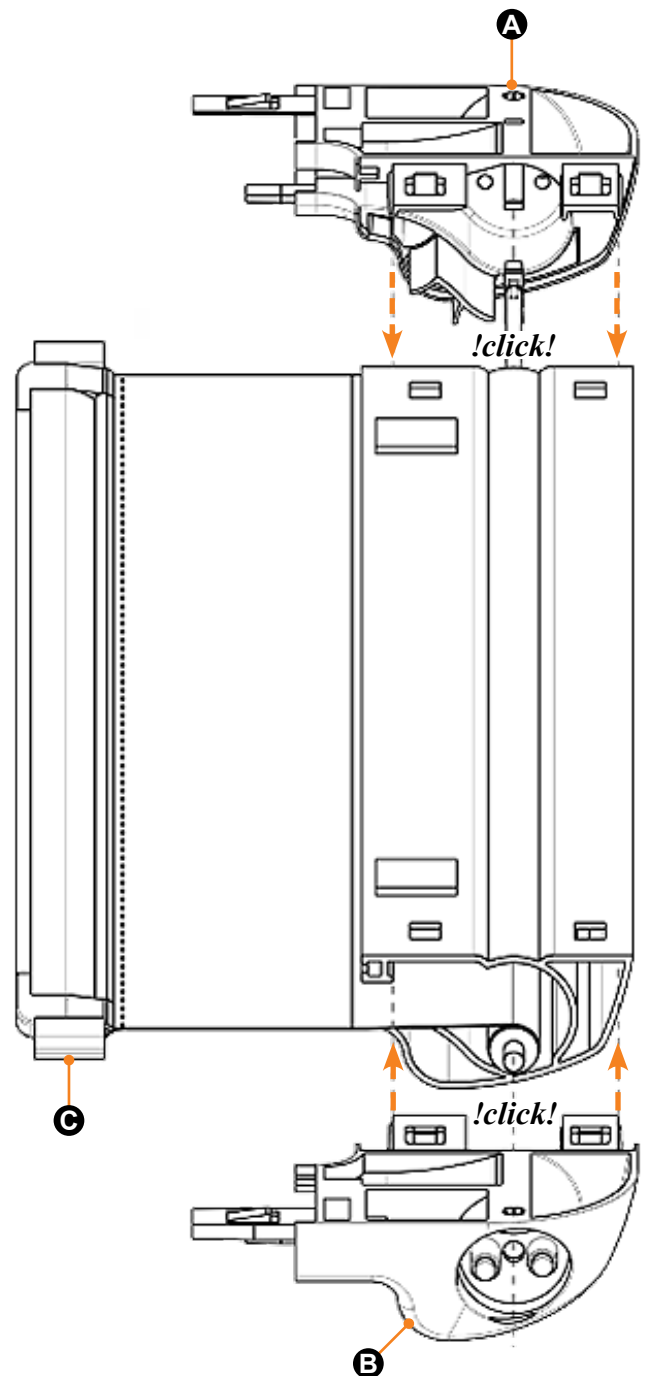


Fig.5

Surface Roller Shade Spare Part

Installation and Owner's Manual
(For Aftermarket Applications)

4. Push the corner adapters (Fig.1A) into the seal grooves on the side rail and cassette.

5. Push the silicon seal (Fig.1B) all around the internal edges.

Adjusting Material/Spring Tension

After the corner moldings have been reattached, the roller shade will need to be re-tensioned for proper operation of the screen.

1. Remove the screw cover (Fig.6A) by inserting a small flat head screwdriver into the slot at the top of the cover and popping it off. The screw cover is held in place with magnets.

2. Insert a flat head screwdriver into the end of the tensioner (Fig.6B). Unclip the tensioner by releasing the snap-fit via the hole located on the underside of the blind.

NOTE: Use care as the tensioner is spring-loaded. If the blind is already fitted, use a pair of pliers to pry the tensioner out.

3. Using a pair of small pliers, grip and unclip the spring tensioner. A flathead screwdriver may be used to assist with unclipping. See figure 6.

NOTE: Use care when unclipping the spring tensioner. The spring tensioner is spring-loaded and will be energized.

4. While keeping a hold on the pliers, allow the tensioner to retract from the corner molding.

5. Turn the tensioner clockwise (CW) to decrease tension and counterclockwise (CCW) to increase tension (Fig.6).

6. Push the tensioner back into the corner molding to secure it.

7. Test the tension of the surface roller shade by pulling material out about 100 mm (4"). Material should smoothly return into the cassette without snapping back.

8. If necessary, repeat steps 2-7 until the material smoothly returns into the cassette without snapping back.

9. Reinstall previously removed (step 1) screw cover.

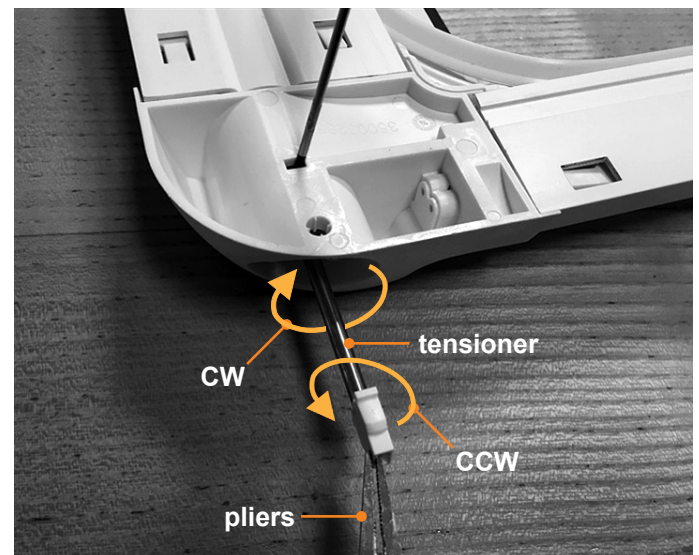
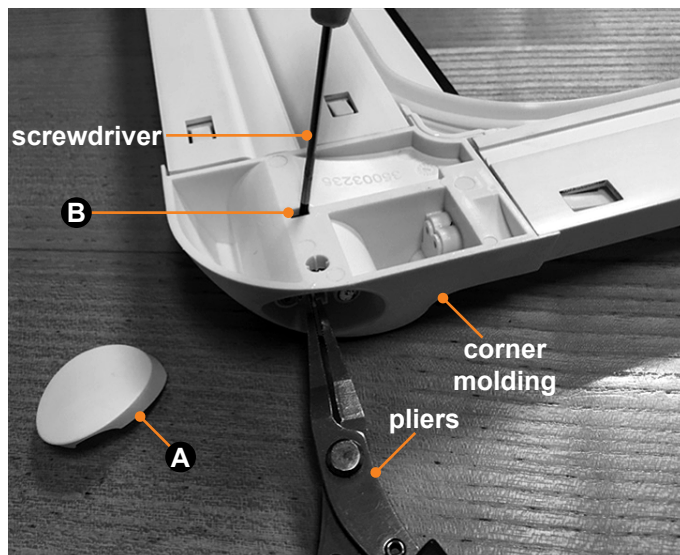


Fig.6

Limited Warranty and Key Terms of Supply by Lewmar

Lewmar warrants that in normal private pleasure boat usage and with proper maintenance its products will conform with their specification for a period of three years from the date of purchase by the end user, subject to the conditions, limitations and exceptions listed below. Any product, which proves to be defective in normal usage during that three-year period, will be repaired or, at Lewmar's option, replaced by Lewmar.

A CONDITIONS AND LIMITATIONS

- i** Lewmar's liability shall be limited to the repair or replacement of any parts of the product which are defective in materials or workmanship.
- ii** Responsibility for the selection of products appropriate for the use intended by the Buyer shall rest solely with the Buyer and Lewmar accepts no responsibility for any such selection.
- iii** Lewmar shall not be liable in any way for Product failure, or any resulting loss or damage that arises from:
 - a.** use of a product in an application for which it was not designed or intended;
 - b.** corrosion, ultra violet degradation or wear and tear;
 - c.** a failure to service or maintain the product in accordance with Lewmar's recommendations;
 - d.** faulty or deficient installation of the product (unless conducted by Lewmar);
 - e.** any modification or alteration of the product;
 - f.** conditions that exceed the product's performance specifications or safe working loads.
 - g.** Abuse
- iv** Product subject to a warranty claim must be returned to the Lewmar outlet that supplied the product for examination unless otherwise approved by Lewmar in writing.
- v** This warranty does not cover any incidental costs incurred for the investigation, removal, carriage, transport or installation of product.
- vi** Service by anyone other than authorized Lewmar representatives shall void this warranty unless it accords with Lewmar guidelines and standards of workmanship.

- vii** Lewmar's products are intended for use only in the marine environment. Buyers intending to use them for any other purpose should seek independent professional advice as to their suitability. Lewmar accepts no liability arising from such other use.

B EXCEPTIONS

Cover under this Warranty is limited to a period of one year from the date of purchase by the end user in the case of any of the following products or parts of products:

- Electric motors and associated electrical equipment
- Electronic controls
- Hydraulic pumps, valves and actuators
- Hatch & Portlight weather seals
- Products used in "Grand Prix" racing applications
- Products used in commercial or charter applications
- Anchor rodes

C LIABILITY

- i** Lewmar's liability under this warranty shall be to the exclusion of all other warranties or liabilities (to the extent permitted by law). In particular (but without limitation):
 - a.** Lewmar shall not be liable for:
 - Any loss of anticipated turnover or profit or indirect, consequential or economic loss;
 - Damages, costs or expenses payable to any third party;
 - Any damage to yachts or equipment;
 - Death or personal Injury (unless caused by Lewmar's negligence).Some states and countries do not allow the exclusion or limitation of incidental or consequential damages, so the above limitation or exclusion may not apply to you.
 - b.** Lewmar grants no other warranties regarding the fitness for purpose, use, nature or satisfactory quality of the products.
- ii** Where applicable law does not permit a statutory or implied warranty to be excluded, then such warranty, if permitted by that state or country's law, shall be limited to a period of one year from the date of purchase by the end user. Some states and countries do not allow limitations on how long an implied warranty lasts, so this limitation may not apply to you.

D PROCEDURE

Notice of a claim for service under this warranty shall be made promptly and in writing by the end user to the Lewmar outlet that supplied the product or to Lewmar Limited Southmoor Lane, Havant, Hampshire PO9 1JH, England.

E SEVERANCE CLAUSE

If any clause of this warranty is held by a court or other competent authority to be invalid or unenforceable in whole or in part, the validity of the remaining clauses of this warranty shall not be affected.

F OTHER RIGHTS

This warranty gives you specific legal rights and you may also have other legal rights, which vary from state to state and country to country. In the case of European States a Consumer Protection Directive (as defined nationally) has legal effect under the applicable national law governing the sale of Consumer Goods; this Warranty does not affect those rights.

G LAW

This warranty shall be governed by and interpreted in accordance with the laws of England or state or country in which the first end user is domiciled at the time of purchase of the product.

H DISPUTES

Any dispute arising under this warranty may, at the option of the end-user, be referred to alternative dispute resolution under the rules of the British Marine Federation or to the Courts of the State whose law shall govern the warranty or to the Courts of England and Wales.

The British Marine Federation may be contacted at:

Marine House
Thorpe Lee road,
Egham,
England
TW20 8BF

MARINE GROUP EUROPE

LEWMAR®



For Product Support: Europe

Lewmar Havant Plant No. 404

T: +44 (0) 23 9247 1841

Email: techsupport@lewmar.com

For Product Support: United States

Lippert Customer Care Center

T: 432-LIPPERT (432-547-7378)

Email: customerservice@lci1.com

The contents of this manual are proprietary and copyright protected by Lippert. Lippert prohibits the copying or dissemination of portions of this manual unless prior written consent from an authorized Lippert representative has been provided. Any unauthorized use shall void any applicable warranty. The information contained in this manual is subject to change without notice and at the sole discretion of Lippert. Revised editions are available for free download from lippert.com.

Please recycle all obsolete materials.